

## Anti-PGC1 alpha antibody

**Catalog No.** B-IO-10213

**Reactivity** Human、Mouse、Rat

**Storage** Store at -20°C. Avoid freeze /thaw cycles.

**Applications** WB; IHC; ICC; IP.

**Host** Rabbit

**Product alias:** LEM6; PGC-1(alpha); PGC-1v; PGC1; PGC1A; PPARGC1; Ligand effect modulator 6

**Note:** *Centrifuge before opening to ensure complete recovery of vial contents.*

**Purification:** Antigen-specific affinity chromatography followed by Protein A affinity chromatography

**Traits:** Liquid

**Concentration:** 1mg/ml

### [ IMMUNOGEN ]

**Immunogen:** Recombinant PPAR $\gamma$ C1a (Ser573~Asn767) expressed in *E.coli*

### [ APPLICATIONS ]

Western blotting: 0.5-2 $\mu$ g/mL;

Immunohistochemistry: 5-20 $\mu$ g/mL;

Immunocytochemistry: 5-20 $\mu$ g/mL;

Optimal working dilutions must be determined by end user.

### [ FORMULATION ]

**Form & Buffer:** Supplied as solution form in PBS, pH7.4, containing 0.02% NaN<sub>3</sub>, 50% glycerol.

### [ STORAGE AND STABILITY ]

**Stability Test:** The thermal stability is described by the loss rate. The loss rate was determined by accelerated thermal degradation test, that is, incubate the protein at 37°C for 48h, and no obvious degradation and precipitation were observed. The loss rate is less than 5% within the expiration date under appropriate storage condition.

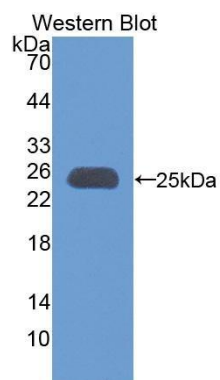
**[ IDENTIFICATION ]**

Figure. Western Blot; Sample:  
Recombinant PPAR $\gamma$ C1a, Human

For Research Use Only