

HDAC1 Polyclonal Antibody

Catalog No.	B-IO-10159	Reactivity	H,M,Pig
Storage	Store at -20°C. Avoid freeze / thaw cycles.	Host	Rabbit
Applications	WB,IHC,ICC,IP	Isotype	IgG

Note: Centrifuge before openensure complete recovery of vial contents.

Immunogen Information

Immunogen Recombinant HDAC1 (Met1~Ala482) expressed in E.coli

Applications

Western blotting: 0.5-3μg/mL;

Immunohistochemistry: 5-30μg/mL;

Immunocytochemistry: 5-30μg/mL;

Optimal working dilutions must be determined by end user.

Formulation

Form & Buffer: Supplied as solution form in 0.01M PBS, pH7.4, containing 0.05% Proclin-300, 50% glycerol.

Storage and stability

Storage: Avoid repeated freeze/thaw cycles.

Store at 4°C for frequent use.

Aliquot and store at -20°C for 12 months.

Stability Test: The thermal stability is described by the loss rate. The loss rate was determined by accelerated thermal degradation test, that is, incubate the protein at 37°C for 48h, and no 2 / 3 obvious degradation and precipitation were observed. The loss rate is less than 5% within the expiration date under appropriate storage condition.

Identification

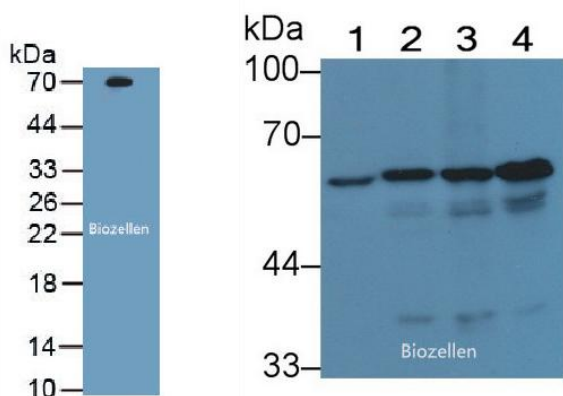
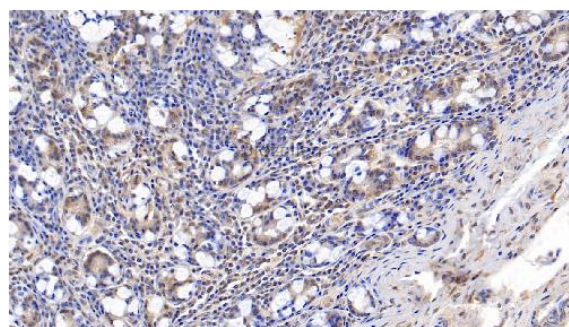


Figure. Western Blot; Sample: Recombinant HDAC1, Human.

Western Blot; Sample: Lane1: Mouse Testis lysate; Lane2: Human Hepg2 cell lysate; Lane3: Human Hela cell lysate; Lane4: Human Jurkat cell lysate
Primary Ab: 1μg/mL Rabbit Anti-Human HDAC1 Antibody
Second Ab: 0.2μg/mL HRP-Linked Caprine Anti-Rabbit IgG Polyclonal Antibody (Catalog: SAA544Rb19)



DAB staining on IHC-P; Samples: Human Small intestine Tissue; Primary Ab: 30μg/ml Rabbit Anti-Human HDAC1 Antibody Second Ab: 2μg/mL HRP-Linked Caprine Anti-Rabbit IgG Polyclonal Antibody (Catalog: SAA544Rb19)