

Cleaved-PARP1 (D214) Polyclonal Antibody

Catalog No.	B-IO-10204	Reactivity	H,M
Storage	Store at -20°C. Avoid freeze / thaw cycles.	Host	Rabbit
Applications	WB,IHC-p,IF,ELISA	Isotype	IgG

Note: Centrifuge before opening to ensure complete recovery of vial contents.

Immunogen Information

Immunogen	Synthesized peptide derived from the Internal region of human PARP-1
GeneID	142
Swissprot	P09874
Synonyms	PARP,PPOL,ADPRT,ARTD1,ADPRT1,PARP-1,AD PRT 1,pADPRT-1

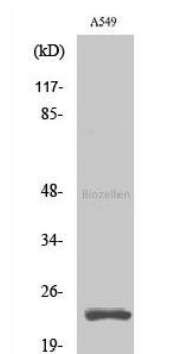
Product Information

Calculated MW	113kDa
Observed MW	24kDa
Buffer	PBS with 0.02% sodium azide, 0.5% BSA and 50% glycerol, pH7.4
Purify	Affinity purification
Dilution	WB 1:500-2000, IHC 1:50-300, IF 1:50-300

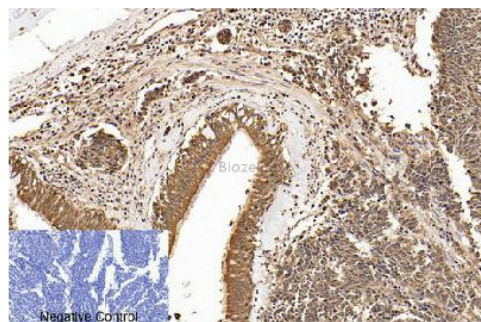
Background

This gene encodes a chromatin-associated enzyme, poly(ADP-ribose)transferase, which modifies various nuclear proteins by poly(ADP-ribose)ation. The modification is dependent on DNA and is involved in the regulation of various important cellular processes such as differentiation, proliferation, and tumor transformation and also in the regulation of the molecular events involved in the recovery of cell from DNA damage. In addition, this enzyme may be the site of mutation in Fanconi anemia, and may participate in the pathophysiology of type I diabetes.

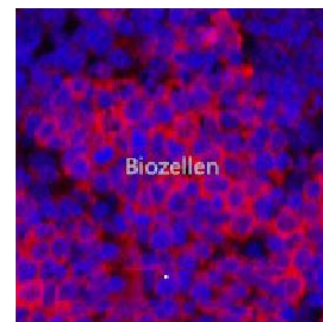
Images



Western Blot analysis of A549 cells using Cleaved-PARP1 (D214) Polyclonal Antibody at dilution of 1:2000.



Immunohistochemistry of paraffin-embedded Human lung cancer tissue using Cleaved-PARP1 (D214) Polyclonal Antibody at dilution of 1:200.



Immunofluorescence analysis of Rat spleen tissue using Cleaved-PARP1 (D214) Polyclonal Antibody at dilution of 1:200.