

## beta Tubulin Polyclonal Antibody

<b>Catalog No.</b>	B-IO-10203	<b>Reactivity</b>	M,R
<b>Storage</b>	Store at -20°C. Avoid freeze / thaw cycles.	<b>Host</b>	Rabbit
<b>Applications</b>	WB,IHC-p,IF,ELISA	<b>Isotype</b>	IgG

**Note:** Centrifuge before opensure complete recovery of vial contents.

### Immunogen Information

<b>Immunogen</b>	Synthesized peptide derived from the C-terminal region of mouse Tubulin $\beta$
<b>Swissprot</b>	Q13509
<b>Synonyms</b>	TUBB3,TUBB4,Tubulin beta-3 chain,Tubulin beta-4 chain,Tubulin beta-III

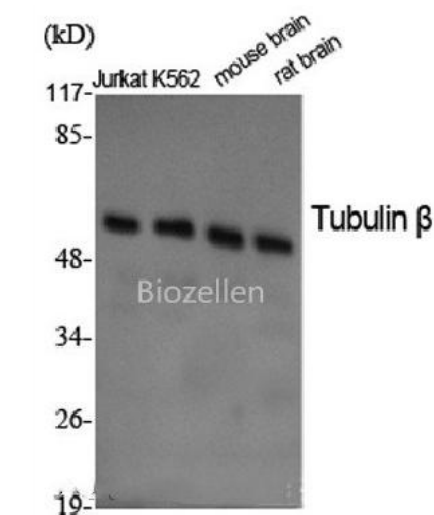
### Product Information

<b>Calculated MW</b>	50kDa
<b>Observed MW</b>	55kDa
<b>Buffer</b>	PBS with 0.02% sodium azide,0.5% BSA and 50% glycerol pH 7.4.
<b>Purify</b>	Affinity purification
<b>Dilution</b>	WB 1:500-1:2000, IHC 1:100-1:300, IF 1:200-1:1000, ELISA 1:5000

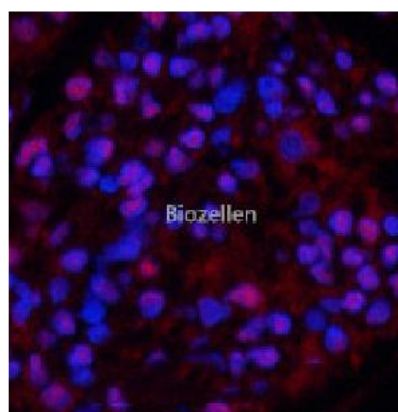
### Background

TUBB3,the class III  $\beta$  tubulin or Tuj1,is selectively expressed in testis and neurons of the central and peripheral nervous system. It has been widely used as a marker for neurons. Aberrant expression of TUBB3 has also been found in various tumors of non-neural origin and can be used as a biomarker for cancer aggressiveness and a marker for the tendency to respond poorly to chemotherapy. This antibody is specific to TUBB3 but not cross-react with other tubulin isoforms.

### Images



Western Blot analysis of various cells using beta Tubulin Polyclonal Antibody at dilution of 1:2000.



Immunofluorescence analysis of Rat kidney tissue using beta Tubulin Polyclonal Antibody at dilution of 1:200.