

beta Tubulin Monoclonal Antibody

Catalog No.	B-IO-10202	Reactivity	H,M,R,Mk,Ch,Dg,Hm,Rb,
Storage	Store at -20°C. Avoid freeze / thaw cycles.	Host	Mouse
Applications	WB,IHC-p,IF	Isotype	IgG

Note: Centrifuge before openensure complete recovery of vial contents.

Immunogen Information

Immunogen	Synthetic Peptide
Swissprot	Q13509
Synonyms	TUBB3,TUBB4,Tubulin beta-3 chain,Tubulin beta-4 chain,Tubulin beta-III

Product Information

Calculated MW	50kDa
Observed MW	55kDa
Buffer	PBS with 0.02% sodium azide, 50% glycerol, pH7.4
Purify	Protein A purification
Clone No.	Clone:8B2
Dilution	WB 1:5000-1:10000, IHC 1:100-1:300, IF 1:100-1:300

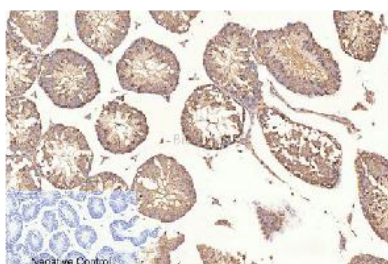
Background

There are five tubulins in human cells: alpha, beta, gamma, delta, and epsilon. Tubulins are conserved across species. They form heterodimers, which multimerize to form a microtubule filament. An alpha and beta tubulin heterodimer is the basic structural unit of microtubules. The heterodimer does not come apart, once formed. The alpha and beta tubulins, which are each about 55 kDa MW, are homologous but not identical. Alpha, beta, and gamma tubulins have all been used as loading controls. Tubulin expression may vary according to resistance to antimicrobial and antimitotic drugs.

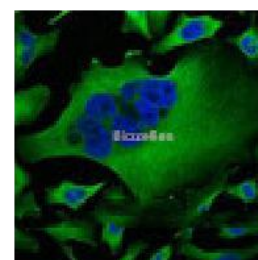
Images



Western Blot analysis of A549, Rat brain, Mouse brain, Chicken lung, Rabbit testis, Sheep muscle using beta Tubulin Monoclonal Antibody at dilution of 1:5000.



Immunohistochemistry of paraffin-embedded Mouse testis tissue using beta Tubulin Monoclonal Antibody at dilution of 1:200.



Immunofluorescence analysis of HeLa tissue using beta Tubulin Monoclonal Antibody at dilution of 1:100.