

## CNPY2 Polyclonal Antibody

<b>Catalog No.</b>	B-IO-10201	<b>Reactivity</b>	H,M
<b>Storage</b>	Store at -20°C. Avoid freeze / thaw cycles.	<b>Host</b>	Rabbit
<b>Applications</b>	WB,IHC,ELISA	<b>Isotype</b>	IgG

**Note:** Centrifuge before opensure complete recovery of vial contents.

### Immunogen Information

<b>Immunogen</b>	Full length fusion protein
<b>Gene Accession</b>	BC065015
<b>Swissprot</b>	Q9Y2B0
<b>Synonyms</b>	Cnpy2,CNPY2,MIR-interacting saposin-like protein,MSAP,Protein canopy homolog 2,ZSIG9

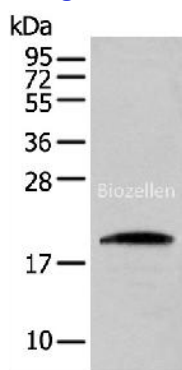
### Product Information

<b>Calculated MW</b>	21 kDa
<b>Observed MW</b>	Refer to figures
<b>Buffer</b>	PBS with 0.05% NaN3 and 40% Glycerol,pH7.4
<b>Purify</b>	Antigen affinity purification
<b>Dilution</b>	WB 1:500-1:2000, IHC 1:25-1:100, ELISA 1:5000-1:10000

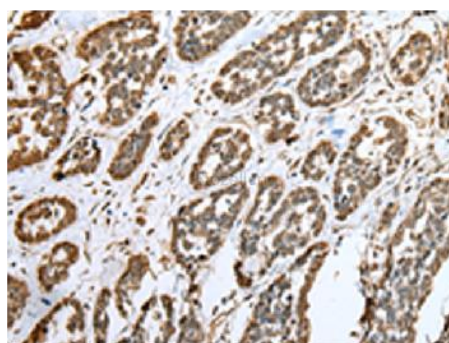
### Background

CNPY2,also named as MSAP,TMEM4 and ZSIG9,is a positive regulator of neurite outgrowth. It interacts with the ezrin-radixin-moesin (ERM)-like myosin regulatory light chain-interacting protein (MIR),and the two proteins are co-localized in cell lines and in primary neurons. CNPY2 can stabilize MRLC and thus bring about an increase in neurite outgrowth. This antibody is specific to CNPY2

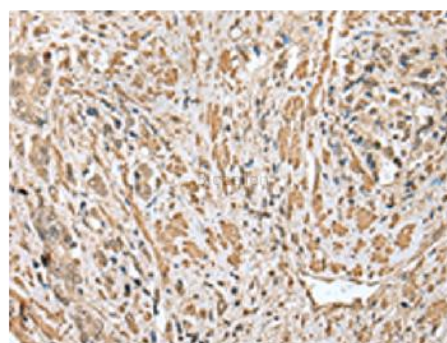
### Images



Western blot analysis of HEPG2 cell using CNPY2 Polyclonal Antibody at dilution of 1:300



Immunohistochemistry of paraffin-embedded Human esophagus cancer tissue using CNPY2 Polyclonal Antibody at dilution of 1:25(×200)



Immunohistochemistry of paraffin-embedded Human prostate cancer tissue using CNPY2 Polyclonal Antibody at dilution of 1:25(×200)