

## CNP Polyclonal Antibody

<b>Catalog No.</b>	B-IO-10200	<b>Reactivity</b>	H,M,R
<b>Storage</b>	Store at -20°C. Avoid freeze / thaw cycles.	<b>Host</b>	Rabbit
<b>Applications</b>	WB,IHC	<b>Isotype</b>	IgG

**Note:** Centrifuge before opensure complete recovery of vial contents.

### Immunogen Information

<b>Immunogen</b>	Recombinant fusion protein of human CNP (NP_149124.3).
<b>GeneID</b>	1267
<b>Swissprot</b>	P09543
<b>Synonyms</b>	CNP,CNP1,CNPase

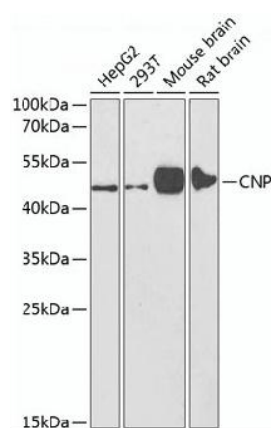
### Product Information

<b>Calculated MW</b>	45 kDa/47 kDa
<b>Observed MW</b>	48 kDa
<b>Buffer</b>	PBS with 0.02% sodium azide, 50% glycerol, pH7.3
<b>Purify</b>	Affinity purification
<b>Dilution</b>	WB 1:500-1:2000 IHC 1:50-1:200

### Background

CNP (2',3'-Cyclic Nucleotide 3' Phosphodiesterase) is a Protein Coding gene. Diseases associated with CNP include Myopia 2, Autosomal Dominant and Isolated Optic Neuritis. Among its related pathways are Neuroscience and MECP2 and Associated Rett Syndrome. Gene Ontology (GO) annotations related to this gene include RNA binding and cyclic nucleotide binding.

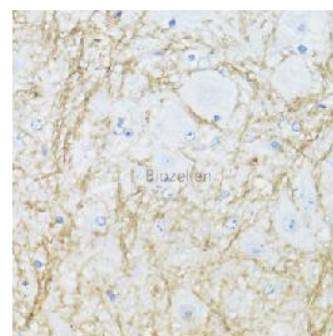
### Images



Western blot analysis of extracts of various cell lines using CNP Polyclonal Antibody at dilution of 1:1000.



Immunohistochemistry of paraffin-embedded Rat brain using CNP Polyclonal Antibody at dilution of 1:100 (40x lens).



Immunohistochemistry of paraffin-embedded Mouse spinal cord using CNP Polyclonal Antibody at dilution of 1:100 (40x lens).