

GFAP Monoclonal Antibody

Catalog No.	B-IO-10197	Reactivity	M,R
Storage	Store at -20°C. Avoid freeze / thaw cycles.	Host	Mouse
Applications	WB,IHC,IF	Isotype	IgG

Note: Centrifuge before opensure complete recovery of vial contents.

Immunogen Information

Immunogen	KLH conjugated Synthetic peptide corresponding to Mouse GFAP
Swissprot	P03995,P47819

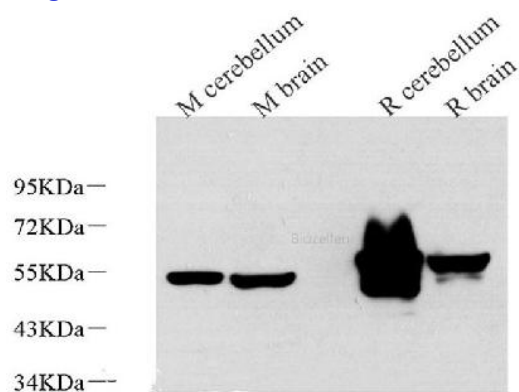
Product Information

Calculated MW	49kDa
Observed MW	49kDa
Buffer	PBS with 0.02% sodium azide,100 µg/ml BSA and 50% glycerol.
Purify	Affinity purification
Clone No.	2B12F1
Dilution	WB 1:500-1:5000, IHC 1:500-1:2000, IF 1:200-1:1000

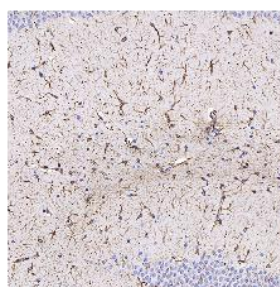
Background

GFAP (Glial fibrillary acidic protein),an intermediate-filament (IF) protein ,is specifically expressed in cells of astroglial lineage and is widely used to mark the astroglia in the brain. It is also used as a marker for intracranial and intraspinal tumors arising from astrocytes.

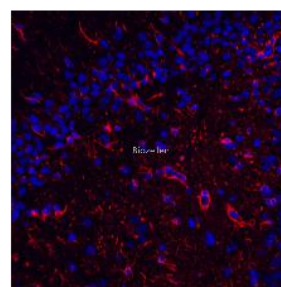
Images



Western Blot analysis of various samples using GFAP Monoclonal Antibody at dilution of 1:1000.



Immunohistochemistry analysis of paraffin-embedded mouse brain using GFAP Monoclonal Antibody at dilution of 1:400.



Immunofluorescence analysis of paraffin-embedded rat brain using GFAP Monoclonal Antibody at dilution of 1:400.