

(KO Validated) ROCK1 Polyclonal Antibody

Catalog No.	B-IO-10196	Reactivity	H,M,R
Storage	Store at -20°C. Avoid freeze / thaw cycles.	Host	Rabbit
Applications	WB,IHC	Isotype	IgG

Note: Centrifuge before opensure complete recovery of vial contents.

Immunogen Information

Immunogen	Recombinant fusion protein of human ROCK1 (NP_005397.1).
GenelD	6093
Swissprot	Q13464
Synonyms	ROCK1,P160ROCK,ROCK-I

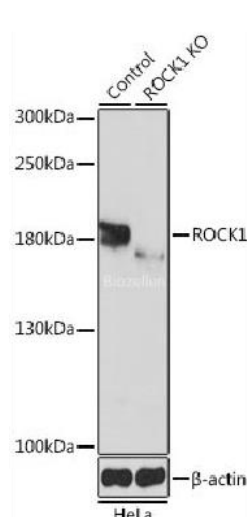
Product Information

Calculated MW	158 kDa
Observed MW	158 kDa
Buffer	PBS with 0.02% sodium azide, 50% glycerol, pH7.3
Purify	Affinity purification
Dilution	WB 1:500-1:2000 IHC 1:50-1:100

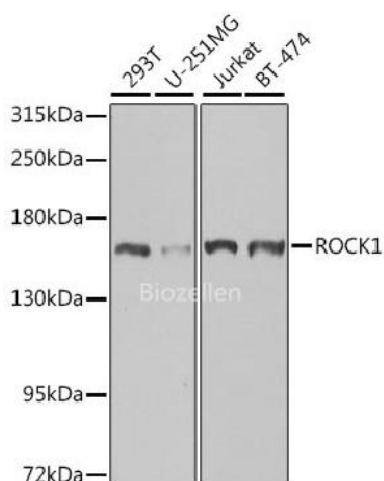
Background

This gene encodes a protein serine/threonine kinase that is activated when bound to the GTP-bound form of Rho. The small GTPase Rho regulates formation of focal adhesions and stress fibers of fibroblasts, as well as adhesion and aggregation of platelets and lymphocytes by shuttling between the inactive GDP-bound form and the active GTP-bound form. Rho is also essential in cytokinesis and plays a role in transcriptional activation by serum response factor. This protein, a downstream effector of Rho, phosphorylates and activates LIM kinase, which in turn, phosphorylates cofilin, inhibiting its actin-depolymerizing activity. A pseudogene, related to this gene, is also located on chromosome 18.

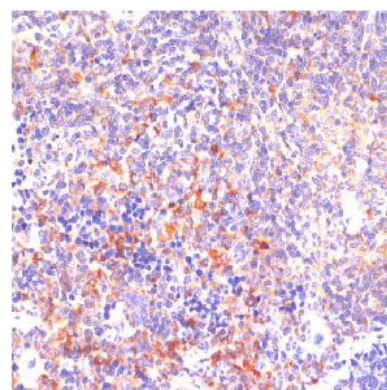
Images



Western blot analysis of extracts from normal (control) and ROCK1 knockout (KO) HeLa cells using ROCK1 Polyclonal Antibody at dilution of 1:1000.



Western blot analysis of extracts of various cell lines using ROCK1 Polyclonal Antibody at dilution of 1:1000.



Immunohistochemistry of paraffin-embedded Mouse spleen using ROCK1 Polyclonal Antibody at dilution of 1:100 (40x lens).