

Lamin B1 Monoclonal Antibody

Catalog No.	B-IO-10189	Reactivity	H,M,R
Storage	Store at -20°C. Avoid freeze / thaw cycles.	Host	Mouse
Applications	WB,IHC-p,IF,IP	Isotype	IgG

Note: Centrifuge before opening to ensure complete recovery of vial contents.

Immunogen Information

Immunogen	Recombinant Protein
Swissprot	P20700
Synonyms	LMNB1,LMN2,LMNB,Lamin-B1

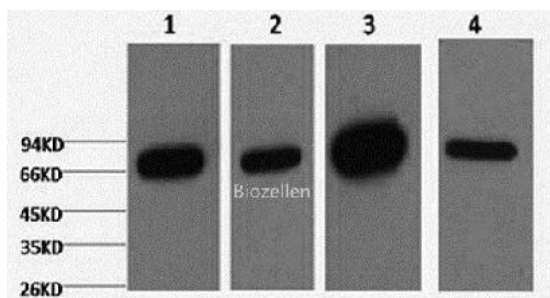
Product Information

Calculated MW	66kDa
Observed MW	68kDa
Buffer	PBS with 0.02% sodium azide, 50% glycerol, pH7.4
Purify	Protein A purification
Clone No.	Clone:4K2
Dilution	WB 1:500-1:2000, IHC 1:50-300, IF 1:50-1:200, IP 1:100-1:300

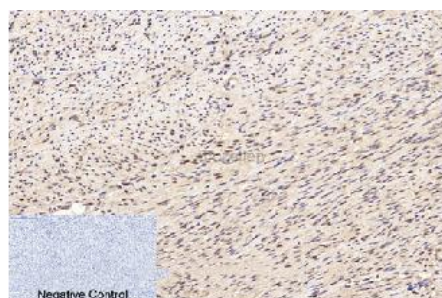
Background

Lamins are components of the nuclear lamina, a fibrous layer on the nucleoplasmic side of the inner nuclear membrane, which is thought to provide a framework for the nuclear envelope and may also interact with chromatin.

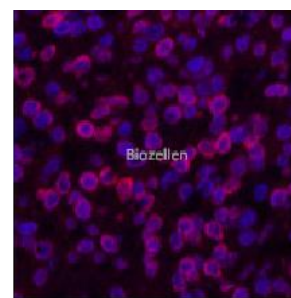
Images



Western Blot analysis of 1) HepG2, 2) 293T, 3) Mouse brain, 4) Rat brain using Lamin B1 Monoclonal Antibody at dilution of 1:5000.



Immunohistochemistry of paraffin-embedded Human uterus tissue using Lamin B1 Monoclonal Antibody at dilution of 1:200.



Immunofluorescence analysis of Human lung cancer tissue using Lamin B1 Monoclonal Antibody at dilution of 1:200.