

Laminin alpha5 Polyclonal Antibody

Catalog No.	B-IO-10188	Reactivity	H,M
Storage	Store at -20°C. Avoid freeze / thaw cycles.	Host	Rabbit
Applications	WB,IHC-p,ELISA	Isotype	IgG

Note: Centrifuge before opening to ensure complete recovery of vial contents.

Immunogen Information

Immunogen	Synthesized peptide derived from the Internal region of human Laminin α -5
GeneID	3911
Swissprot	O15230
Synonyms	LAMA5, KIAA0533, KIAA1907, Laminin subunit alpha-5, Laminin-10 subunit alpha, Laminin-11 subunit alpha, Laminin-15 subunit alpha

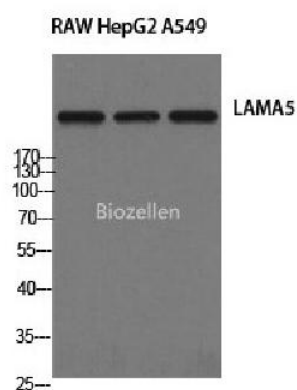
Product Information

Calculated MW	400kDa
Observed MW	400kDa
Buffer	PBS with 0.02% sodium azide, 0.5% BSA and 50% glycerol, pH7.4
Purify	Affinity purification
Dilution	WB 1:500-1:2000, IHC 1:100-1:300, ELISA 1:20000

Background

Components of the extracellular matrix exert myriad effects on tissues throughout the body. In particular, the laminins, a family of heterotrimeric extracellular glycoproteins, affect tissue development and integrity in such diverse organs as the kidney, lung, skin, and nervous system. It is thought that laminins mediate the attachment, migration, and organization of cells into tissues during embryonic development by interacting with other extracellular matrix components. Laminins function as heterotrimeric complexes of alpha, beta, and gamma chains, with each chain type representing a different subfamily of proteins. The protein encoded by this gene belongs to the alpha subfamily of laminin chains and is a major component of basement membranes. Two transcript variants encoding different isoforms have been found for this gene, but the full-length nature of one of them has not been determined.

Images



Western Blot analysis of RAW264.7, HepG2, A549 cells with Laminin alpha5 Polyclonal Antibody