

## p16 Polyclonal Antibody

<b>Catalog No.</b>	B-IO-10186	<b>Reactivity</b>	H
<b>Storage</b>	Store at -20°C. Avoid freeze / thaw cycles.	<b>Host</b>	Rabbit
<b>Applications</b>	IHC, ELISA	<b>Isotype</b>	IgG

**Note:** Centrifuge before opensure complete recovery of vial contents.

### Immunogen Information

<b>Immunogen</b>	Synthetic peptide of human USP16
<b>Gene Accession</b>	NP006438
<b>Swissprot</b>	Q9Y5T5
<b>Synonyms</b>	MSTP039, Ubiquitin carboxyl-terminal hydrolase 16, UBP M, UBP16, UBPM, usp16

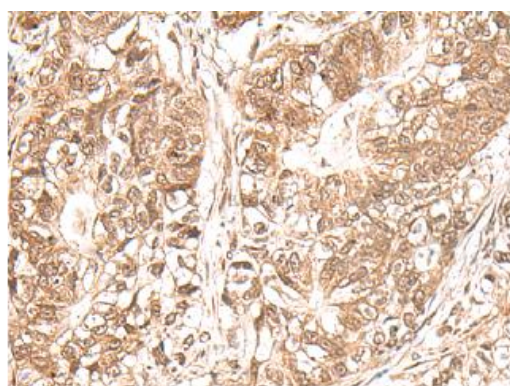
### Product Information

<b>Buffer</b>	PBS with 0.05% NaN <sub>3</sub> and 40% Glycerol, pH7.4
<b>Purify</b>	Antigen affinity purification
<b>Dilution</b>	IHC 1:30-1:150, ELISA 1:5000-1:10000

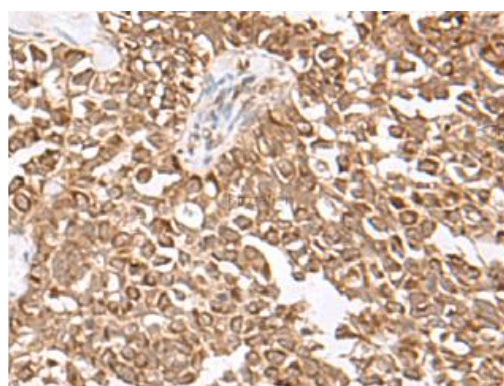
### Background

This gene encodes a deubiquitinating enzyme that is phosphorylated at the onset of mitosis and then dephosphorylated at the metaphase/anaphase transition. It can deubiquitinate H2A, one of two major ubiquitinated proteins of chromatin, in vitro and a mutant form of the protein was shown to block cell division. Alternate transcriptional splice variants, encoding different isoforms, have been characterized.

### Images



Immunohistochemistry of paraffin-embedded Human gastric cancer tissue using USP16 Polyclonal Antibody at dilution of 1:25 (×200)



Immunohistochemistry of paraffin-embedded Human ovarian cancer tissue using USP16 Polyclonal Antibody at dilution of 1:25 (×200)