

## ANXA1 Polyclonal Antibody

<b>Catalog No.</b>	B-IO-10089	<b>Reactivity</b>	H,M,R
<b>Storage</b>	Store at -20°C. Avoid freeze / thaw cycles.	<b>Host</b>	Rabbit
<b>Applications</b>	WB,ELISA	<b>Isotype</b>	IgG

**Note:** Centrifuge before opening to ensure complete recovery of vial contents.

### Immunogen Information

<b>Immunogen</b>	Recombinant protein of human ANXA1
<b>Gene Accession</b>	BC001275
<b>Swissprot</b>	P04083
<b>Synonyms</b>	ANX1,LPC1

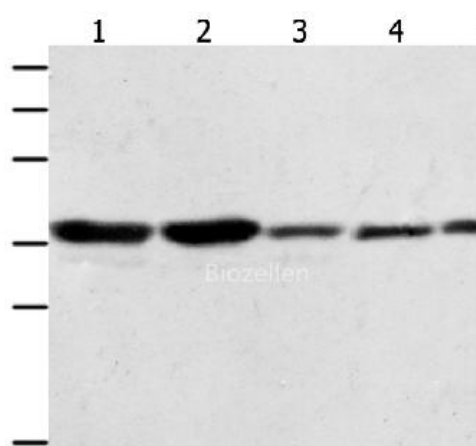
### Product Information

<b>Calculated MW</b>	39kDa
<b>Buffer</b>	PBS with 0.05% sodium azide, 50% glycerol, PH7.3
<b>Purify</b>	Affinity purification
<b>Dilution</b>	WB 1:500-1:2000

### Background

Annexin I belongs to a family of Ca(2+)-dependent phospholipid binding proteins which have a molecular weight of approximately 35,000 to 40,000 and are preferentially located on the cytosolic face of the plasma membrane. Annexin I protein has an apparent relative molecular mass of 40 kDa, with phospholipase A2 inhibitory activity. Since phospholipase A2 is required for the biosynthesis of the potent mediators of inflammation, prostaglandins and leukotrienes, annexin I may have potential anti-inflammatory activity.

### Images



Western Blot analysis of A431, NIH/3T3, HeLa, Jurkat and PC3 cell using ANXA1 Polyclonal Antibody at dilution of 1:400