

beta Tubulin Polyclonal Antibody

| | | | |
|---------------------|---|-------------------|--------|
| Catalog No. | B-IO-10033 | Reactivity | M,R |
| Storage | Store at -20°C. Avoid freeze / thaw cycles. | Host | Rabbit |
| Applications | WB,IHC-p,IF,ELISA | Isotype | IgG |

Note: Centrifuge before opening to ensure complete recovery of vial contents.

Immunogen Information

| | |
|------------------|---|
| Immunogen | Synthesized peptide derived from the C-terminal region of mouse Tubulin β |
| Swissprot | Q13509 |
| Synonyms | TUBB3,TUBB4,Tubulin beta-3 chain,Tubulin beta-4 chain,Tubulin beta-III |

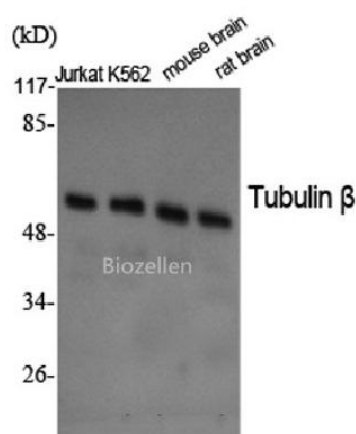
Product Information

| | |
|----------------------|---|
| Calculated MW | 50kDa |
| Observed MW | 55kDa |
| Buffer | PBS with 0.02% sodium azide,0.5% BSA and 50% glycerol pH 7.4. |
| Purify | Affinity purification |
| Dilution | WB 1:500-1:2000, IHC 1:100-1:300, IF 1:200-1:1000, ELISA 1:5000 |

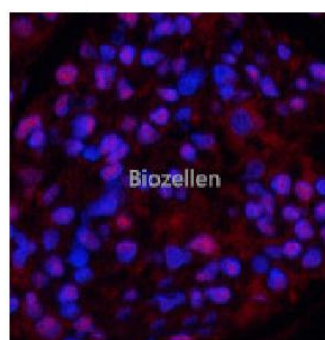
Background

TUBB3, the class III β tubulin or Tuj1, is selectively expressed in testis and neurons of the central and peripheral nervous system. It has been widely used as a marker for neurons. Aberrant expression of TUBB3 has also been found in various tumors of non-neural origin and can be used as a biomarker for cancer aggressiveness and a marker for the tendency to respond poorly to chemotherapy. This antibody is specific to TUBB3 but not cross-react with other tubulin isoforms.

Images



Western Blot analysis of various cells using beta Tubulin Polyclonal Antibody at dilution of 1:2000.



Immunofluorescence analysis of Rat kidney tissue using beta Tubulin Polyclonal Antibody at dilution of 1:200.