

## S100A4 Polyclonal Antibody

<b>Catalog No.</b>	B-IO-10024	<b>Reactivity</b>	H,M,R
<b>Storage</b>	Store at -20°C. Avoid freeze / thaw cycles.	<b>Host</b>	Rabbit
<b>Applications</b>	IHC,ELISA	<b>Isotype</b>	IgG
<b>Note:</b> Centrifuge before opening to ensure complete recovery of vial contents			

### Images/Immunogen Information

<b>Immunogen</b>	Recombinant protein of human S100A4
<b>Gene Accession</b>	BC016300
<b>Swissprot</b>	P26447
<b>Synonyms</b>	42A,18A2,CAPL,FSP1,MTS1,P9KA,PEL98

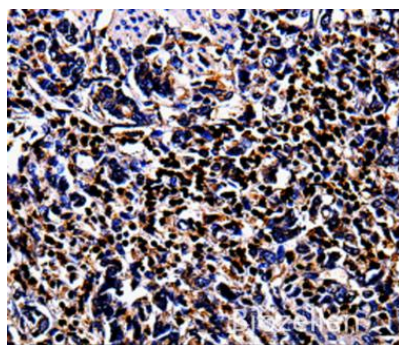
### Product Information

<b>Buffer</b>	PBS with 0.05% sodium azide, 50% glycerol, PH7.3
<b>Purify</b>	Affinity purification
<b>Dilution</b>	IHC 1:100-1:200

### Background

The protein encoded by this gene is a member of the S100 family of proteins containing 2 EF-hand calcium-binding motifs. S100 proteins are localized in the cytoplasm and/or nucleus of a wide range of cells, and involved in the regulation of a number of cellular processes such as cell cycle progression and differentiation. S100 genes include at least 13 members which are located as a cluster on chromosome 1q21. This protein may function in motility, invasion, and tubulin polymerization. Chromosomal rearrangements and altered expression of this gene have been implicated in tumor metastasis. Multiple alternatively spliced variants, encoding the same protein, have been identified. of cancer.

### Images



Immunohistochemistry of paraffin-embedded Human stomach cancer tissue using S100A4 Polyclonal Antibody at dilution 1:100