

S100A4 Polyclonal Antibody

Catalog No.	B-IO-10023	Reactivity	H,M,R
Storage	Store at -20°C. Avoid freeze / thaw cycles.	Host	Rabbit
Applications	WB, IHC	Isotype	IgG

Note: Centrifuge before opening to ensure complete recovery of vial contents

Images/Immunogen Information

Immunogen	Recombinant protein corresponding to Mouse S100A4
Swissprot	P26447,P07091,P05942
Synonyms	S100A4, 18A2, 42A, CAPL, FSP1, MTS1, P9KA, PEL98, S100 calcium binding protein A4

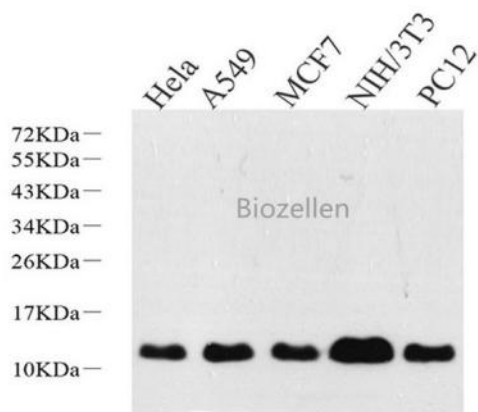
Product Information

Calculated MW	12kDa
Observed MW	12kDa
Buffer	PBS with 0.02% sodium azide, 100 µg/ml BSA and 50% glycerol.
Purify	Affinity purification
Dilution	WB 1:500-1:2000, IHC 1:300-1:800

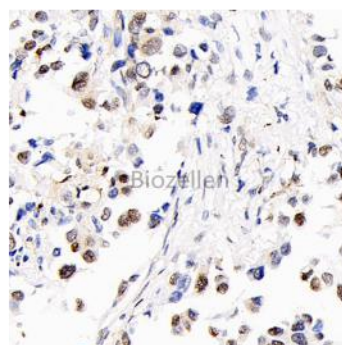
Background

S100A4 is a member of the S100 family of calcium-binding proteins. The S100 family members have been involved in the regulation of a number of cellular processes such as cell cycle progression and differentiation. S100A4 is known to localize to and function in the nucleus, cytoplasm of cells and the extracellular space. S100A4 has also been shown to be associated with tumor growth, motility, invasion, metastasis, angiogenesis, apoptosis and chemoresistance. It is a fibroblast-specific protein associated with mesenchymal cell morphology and motility, is expressed during epithelial-mesenchymal transformations (EMT) in vivo. It is an improved marker for lung fibroblasts that could be useful for investigating the pathogenesis of pulmonary fibrosis. Overexpression of S100A4 is correlated with a worse prognosis in patients with various types of cancer.

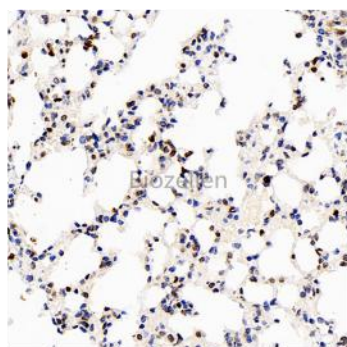
Images



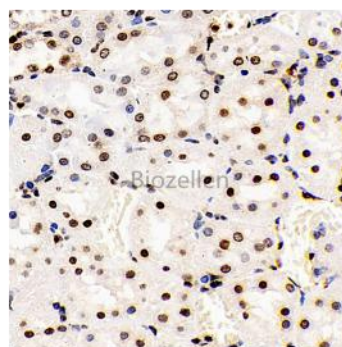
Western Blot analysis of various samples using S100A4 Polyclonal Antibody at dilution of 1:600.



Immunohistochemistry analysis of paraffin-embedded human lung cancer using S100A4 Polyclonal Antibody at dilution of 1:400.



Immunohistochemistry analysis of paraffin-embedded Mouse lung using S100A4 Polyclonal Antibody at dilution of 1:400.



Immunohistochemistry analysis of paraffin-embedded Rat kidney using S100A4 Polyclonal Antibody at dilution of 1:400.