

## FSHR Polyclonal Antibody

|                     |   |                   |        |
|---------------------|---|-------------------|--------|
| <b>Catalog No.</b>  | B-IO-10021                                  | <b>Reactivity</b> | R      |
| <b>Storage</b>      | Store at -20°C. Avoid freeze / thaw cycles. | <b>Host</b>       | Rabbit |
| <b>Applications</b> | WB  | <b>Isotype</b>    | IgG    |

**Note:** Centrifuge before opening to ensure complete recovery of vial contents

### Immunogen Information

|                  |   |
|------------------|---|
| <b>Immunogen</b> | KLH conjugated Synthetic peptide corresponding to Mouse FSHR          |
| <b>Swissprot</b> | P20395  |
| <b>Synonyms</b>  | FSHR, FSHR1, FSHRO, LGR1, ODG1, follicle stimulating hormone receptor |

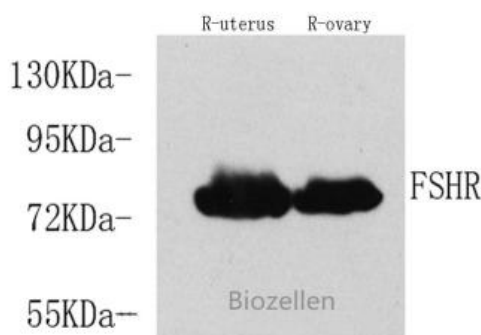
### Product Information

|                      |  |
|----------------------|--|
| <b>Calculated MW</b> | 76kDa  |
| <b>Observed MW</b>   | 76kDa  |
| <b>Buffer</b>        | PBS with 0.02% sodium azide, 100 µg/ml BSA and 50% glycerol. |
| <b>Purify</b>        | Affinity purification  |
| <b>Dilution</b>      | WB 1:500-1:1000  |

### Background

The protein encoded by this gene belongs to family 1 of G-protein coupled receptors. It is the receptor for follicle stimulating hormone and functions in gonad development. Mutations in this gene cause ovarian dysgenesis type 1, and also ovarian hyperstimulation syndrome. Alternative splicing results in multiple transcript variants.

### Images



Western Blot analysis of various samples using FSHR Polyclonal Antibody at dilution of 1:750.