

PCNA Polyclonal Antibody

| | | | |
|---------------------|---------------------------------------------|-------------------|--------|
| Catalog No. | B-IO-10019 | Reactivity | H,M,R |
| Storage | Store at -20°C. Avoid freeze / thaw cycles. | Host | Rabbit |
| Applications | WB,IHC | Isotype | IgG |

Note: Centrifuge before opening to ensure complete recovery of vial contents

Immunogen Information

| | |
|-----------------------|-------------------------------------------------------------------------------------------------------------------------------------------------------|
| Immunogen | Recombinant human Proliferating cell nuclear antigen protein |
| Gene Accession | BC000491 |
| Swissprot | P12004 |
| Synonyms | cb16, Cyclin, DNA polymerase delta auxiliary protein, HGCN8729, MGC8367, PCNA, Polymerase delta accessory protein, Proliferating cell nuclear antigen |

Product Information

| | |
|----------------------|-------------------------------------------------|
| Calculated MW | 29kDa |
| Observed MW | 34kDa |
| Buffer | PBS with 0.05% Proclin300, 50% glycerol, pH7.3. |
| Purify | Affinity purification |
| Dilution | WB 1:500-1:1000, IHC 1:50-1:100 |

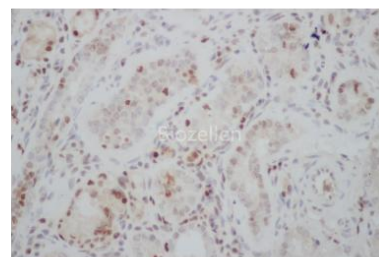
Background

This protein is an auxiliary protein of DNA polymerase delta and is involved in the control of eukaryotic DNA replication by increasing the polymerase's processibility during elongation of the leading strand. Induces a robust stimulatory effect on the 3'-5' exonuclease and 3'-phosphodiesterase, but not apurinic-apyrimidinic (AP) endonuclease, APEX2 activities. Has to be loaded onto DNA in order to be able to stimulate APEX2.

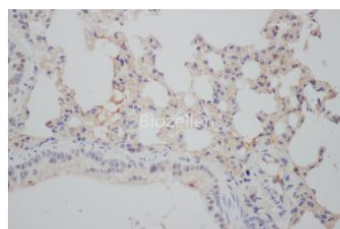
Images



Western Blot analysis of A431 cells and Rat spleen tissue using Proliferating Cell Nuclear Antigen Polyclonal Antibody at dilution of 1:600



Immunohistochemistry of paraffin-embedded Rat kidney using PCNA Polyclonal Antibody at dilution of 1:50



Immunohistochemistry of paraffin-embedded Mouse lung using PCNA Polyclonal Antibody at dilution of 1:50