

KEAP1 Polyclonal Antibody

Catalog No.	B-IO-10018	Reactivity	H,M,R
Storage	Store at -20°C. Avoid freeze / thaw cycles.	Host	Rabbit
Applications	WB,IHC,ELISA	Isotype	IgG

Note: Centrifuge before opening to ensure complete recovery of vial contents

Images/Immunogen Information

Immunogen	Synthetic peptide of human KEAP1
Gene Accession	NP036421
Swissprot	Q14145
Synonyms	Cytosolic inhibitor of Nrf2,INrf 2,INrf2,Keap 1,KEAP1,KEAP1

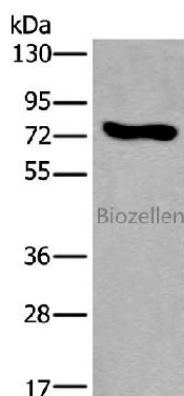
Product Information

Calculated MW	70 kDa
Observed MW	Refer to figures
Buffer	PBS with 0.05% NaN ₃ and 40% Glycerol,pH7.4
Purify	Antigen affinity purification
Dilution	WB 1:500-1:2000, IHC 1:25-1:100, ELISA 1:5000-1:10000

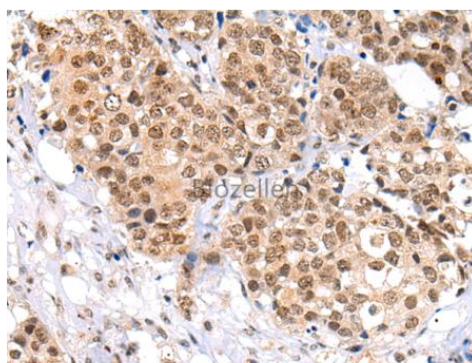
Background

KEAP1,also named as INRF2,KIAA0132 and KLHL19,is part of a multiprotein complex that contains the CUL3-ROC1 ubiquitin ligase,which can ubiquitinate the N-terminal domain of NRF2. Two molecules of KEAP1 bind to two distinct sites in the N-terminal region of NRF2,the ETGE and DLG sites,which affect the KEAP1-NRF2 interaction and/or its physiological consequences. KEAP1 retains NFE2L2/NRF2 in the cytosol. It functions as substrate adapter protein for the E3 ubiquitin ligase complex formed by CUL3 and RBX1. It also retains BPTF in the cytosol. This antibody is a mouse monoclonal antibody raised against residues near the C terminus of human KEAP1.

Images



Western blot analysis of NIH/3T3 cell lysate using KEAP1 Polyclonal Antibody at dilution of 1:600



Immunohistochemistry of paraffin-embedded Human breast cancer tissue using KEAP1 Polyclonal Antibody at dilution of 1:35 (x200)