

α -SMA Polyclonal Antibody

Catalog No.	B-IO-10010	Reactivity	H,M,R
Storage	Store at -20°C. Avoid freeze / thaw cycles.	Host	Rabbit
Applications	WB,IHC-p,IF,ELISA	Isotype	IgG

Note: Centrifuge before opening to ensure complete recovery of vial contents

Images/Immunogen Information

Immunogen	Synthesized peptide derived from α -SMA
Swissprot	P62736,P68133,P63267
Synonyms	a actin,Actin aortic smooth muscle,Actin,Cell growth inhibiting gene 46 protein,Cell growth-inhibiting gene 46 protein,GIG46,Actin alpha skeletal muscle,Actin,actin,alpha 1,skeletal muscle 1,actin,alpha 1

Product Information

Calculated MW	42kDa
Observed MW	42kDa
Buffer	PBS with 0.02% sodium azide, 0.5% BSA and 50% glycerol, pH7.4
Purify	Affinity purification
Dilution	WB 1:500-2000, IHC 1:50-300, IF 1:50-1:200, ELISA 1:10000-20000

Background

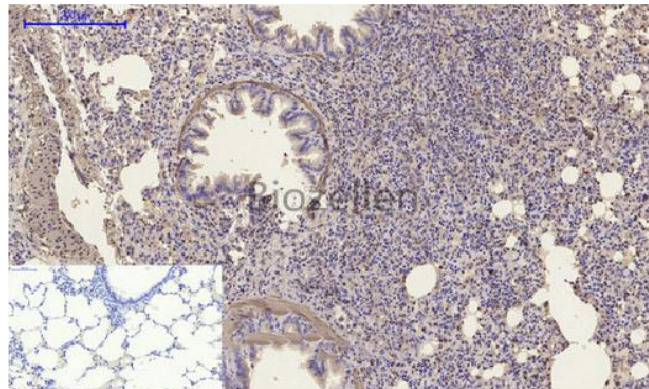
Actins are highly conserved proteins that are involved in various types of cell motility and are ubiquitously expressed in all eukaryotic cells.

ACTA2 (Actin, Alpha 2, Smooth Muscle, Aorta) is a Protein Coding gene. Diseases associated with ACTA2 include Multisystemic Smooth Muscle Dysfunction Syndrome and Moyamoya Disease 5. Among its related pathways are ICos-ICosL Pathway in T-Helper Cell and GPCR Pathway. GO annotations related to this gene include protein kinase binding. An important paralog of this gene is ACTG2. ACTA1 (Actin, Alpha 1, Skeletal Muscle) is a Protein Coding gene. Diseases associated with ACTA1 include Nemaline Myopathy 3, Autosomal Dominant Or Recessive and Myopathy, Congenital, With Fiber-Type Disproportion. Among its related pathways are ICos-ICosL Pathway in T-Helper Cell and GPCR Pathway. GO annotations related to this gene include structural constituent of cytoskeleton and myosin binding. An important paralog of this gene is ACTC1. ACTG2 (Actin, Gamma 2, Smooth Muscle, Enteric) is a Protein Coding gene. Diseases associated with ACTG2 include Visceral Myopathy and Chronic Intestinal Pseudoobstruction. Among its related pathways are ICos-ICosL Pathway in T-Helper Cell and GPCR Pathway. An important paralog of this gene is ACTA2.

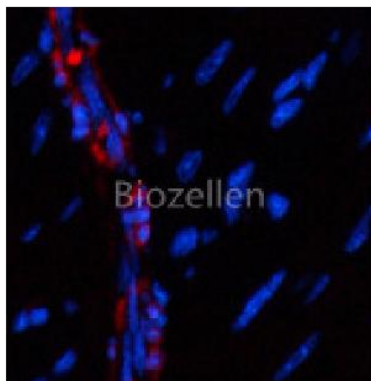
Images



Western Blot analysis of 3T3, Hela cells using α -SMA Polyclonal Antibody at dilution of 1:1500.



Immunohistochemistry of paraffinembedded Rat lung tissue using α -SMA Polyclonal Antibody at dilution of 1:200.



Immunofluorescence analysis of Mouse heart tissue using α -SMA Polyclonal Antibody at dilution of 1:200.