

## mTOR Polyclonal Antibody

<b>Catalog No.</b>	B-IO-10008	<b>Reactivity</b>	H,M,R
<b>Storage</b>	Store at -20°C. Avoid freeze / thaw cycles.	<b>Host</b>	Rabbit
<b>Applications</b>	WB,IF	<b>Isotype</b>	IgG

**Note:** Centrifuge before opening to ensure complete recovery of vial contents

### Immunogen Information

<b>Immunogen</b>	Recombinant fusion protein of human mTOR (NP_004949.1).
<b>GeneID</b>	2475
<b>Swissprot</b>	P42345
<b>Synonyms</b>	FRAP,FRAP1,FRAP2,RAFT1,RAPT1,SKS,mTOR, MTOR

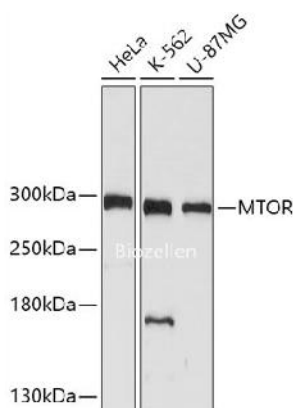
### Product Information

<b>Calculated MW</b>	288 kDa
<b>Observed MW</b>	289 kDa
<b>Buffer</b>	PBS with 0.02% sodium azide, 50% glycerol, pH7.3
<b>Purify</b>	Affinity purification
<b>Dilution</b>	WB 1:500-1:2000 IF 1:50-1:200

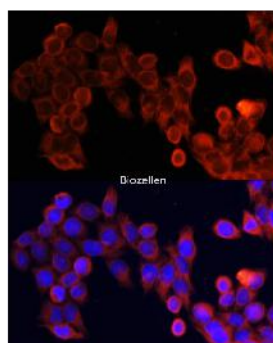
### Background

The protein encoded by this gene belongs to a family of phosphatidylinositol kinase-related kinases. These kinases mediate cellular responses to stresses such as DNA damage and nutrient deprivation. This protein acts as the target for the cell-cycle arrest and immunosuppressive effects of the FKBP12-rapamycin complex. The ANGPTL7 gene is located in an intron of this gene.

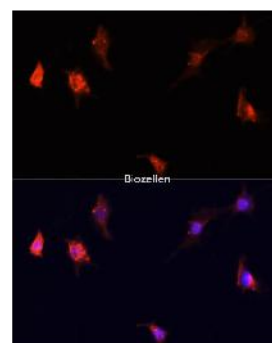
### Images



Western blot analysis of extracts of various cell lines using mTOR Polyclonal Antibody at dilution of 1:1000.



Immunofluorescence analysis of HeLa cells using mTOR Polyclonal Antibody at dilution of 1:100. Blue: DAPI for nuclear staining.



Immunofluorescence analysis of PC12 cells using mTOR Polyclonal Antibody at dilution of 1:100. Blue: DAPI for nuclear staining.