

## MAP1LC3B Polyclonal Antibody

<b>Catalog No.</b>	B-IO-10007	<b>Reactivity</b>	H,M,R,Pg
<b>Storage</b>	Store at -20°C. Avoid freeze / thaw cycles.	<b>Host</b>	Rabbit
<b>Applications</b>	WB,IHC,IF	<b>Isotype</b>	IgG
<b>Note:</b> Centrifuge before opening to ensure complete recovery of vial contents			

### Images/Immunogen Information

<b>Immunogen</b>	A synthetic peptide of human MAP1LC3B
<b>Swissprot</b>	Q9GZQ8
<b>Synonyms</b>	ATG8F;LC3B;MAP1A/1BLC3;MAP1LC3B-a

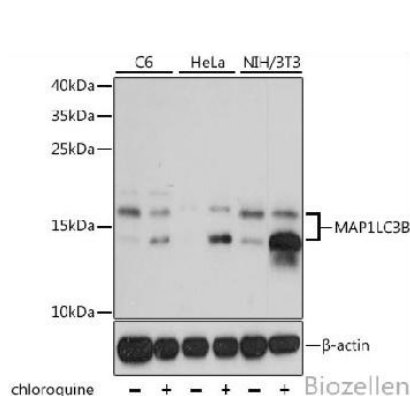
### Product Information

<b>Calculated MW</b>	14kDa
<b>Observed MW</b>	14kDa, 16kDa
<b>Buffer</b>	PBS with 0.02% sodium azide, 50% glycerol, pH7.3.
<b>Purify</b>	Affinity purification
<b>Dilution</b>	WB 1:500 - 1:2000 IHC 1:50 - 1:200 IF 1:50 - 1:200

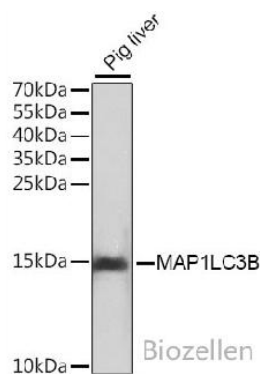
### Background

The product of this gene is a subunit of neuronal microtubule-associated MAP1A and MAP1B proteins, which are involved in microtubule assembly and important for neurogenesis. Studies on the rat homolog implicate a role for this gene in autophagy, a process that involves the bulk degradation of cytoplasmic component.

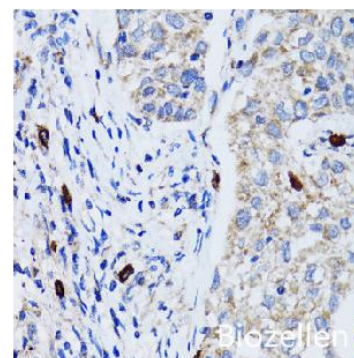
### Images



Western blot analysis of extracts of various cell lines, using MAP1LC3B antibody.



Western blot analysis of extracts of pig liver, using MAP1LC3B antibody.



Immunohistochemistry of paraffin-embedded human lung cancer using MAP1LC3B antibody.