

ATG5 Polyclonal Antibody

Catalog No.	B-IO-10005	Reactivity	H,M,R
Storage	Store at -20°C. Avoid freeze / thaw cycles.	Host	Rabbit
Applications	WB,IHC	Isotype	IgG

Note: Centrifuge before opening to ensure complete recovery of vial contents

Images/Immunogen Information

Immunogen	Recombinant protein of human ATG5
Swissprot	Q9H1Y0

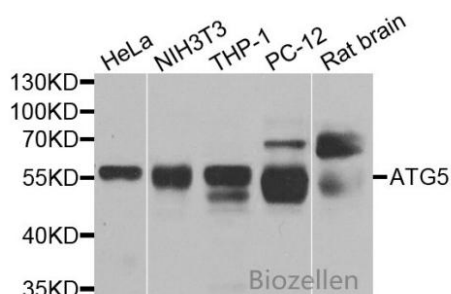
Product Information

Calculated MW	22kDa/32kDa
Observed MW	58kDa
Buffer	PBS with 0.02% sodium azide, 50% glycerol, pH7.3.
Purify	Affinity purification
Dilution	WB 1:500 - 1:2000 IHC 1:50 - 1:100

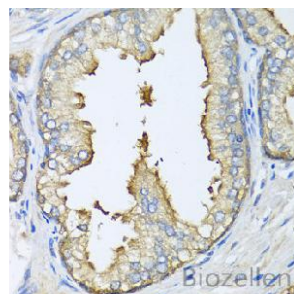
Background

The protein encoded by this gene, in combination with autophagy protein 12, functions as an E1-like activating enzyme in a ubiquitin-like conjugating system. The encoded protein is involved in several cellular processes, including autophagic vesicle formation, mitochondrial quality control after oxidative damage, negative regulation of the innate antiviral immune response, lymphocyte development and proliferation, MHC II antigen presentation, adipocyte differentiation, and apoptosis. Several transcript variants encoding different protein isoforms have been found for this gene.

Images



Western blot analysis of extracts of various cell lines, using ATG5 antibody.



Immunohistochemistry of paraffin-embedded human prostate using ATG5 antibody.