

ATG10 Polyclonal Antibody

Catalog No.	E-AB-10812	Reactivity	H,M
Storage	Store at -20°C. Avoid freeze / thaw cycles.	Host	Rabbit
Applications	WB,IHC,ELISA	Isotype	IgG

Note: Centrifuge before opening to ensure complete recovery of vial contents

Images/Immunogen Information

Immunogen	Recombinant protein of human ATG10
Gene Accession	BC004551
Swissprot	Q9H0Y0
Synonyms	APG10,APG10L,pp12616

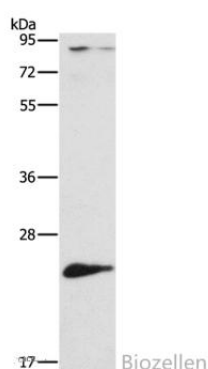
Product Information

Calculated MW	25kDa
Buffer	PBS with 0.05% sodium azide, 50% glycerol, PH7.3
Purify	Affinity purification
Dilution	WB 1:200-1:1000, IHC 1:50-1:200

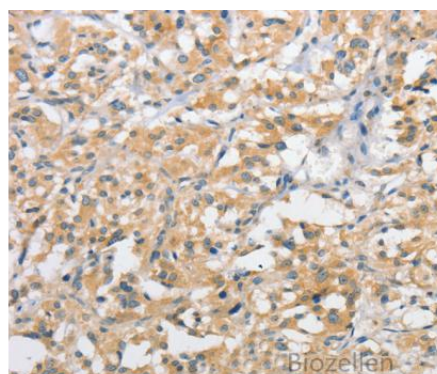
Background

Autophagy is a process for the bulk degradation of cytosolic compartments by lysosomes. ATG10 is an E2-like enzyme involved in 2 ubiquitin-like modifications essential for autophagosome formation: ATG12 (MIM 609608)-ATG5 (MIM 604261) conjugation and modification of a soluble form of MAP-LC3 (MAP1LC3A; MIM 601242), a homolog of yeast Apg8, to a membrane-bound form.

Images



Western Blot analysis of Mouse liver tissue using ATG10 Polyclonal Antibody at dilution of 1:500



Immunohistochemistry of paraffin-embedded Human thyroid cancer using ATG10 Polyclonal Antibody at dilution of 1:60