

## FRK Polyclonal Antibody

<b>Catalog No.</b>	B-IO-10003	<b>Reactivity</b>	H,M,R
<b>Storage</b>	Store at -20°C. Avoid freeze / thaw cycles.	<b>Host</b>	Rabbit
<b>Applications</b>	WB,IHC ,ELISA	<b>Isotype</b>	IgG
<b>Note:</b> Centrifuge before opening to ensure complete recovery of vial contents			

### Immunogen Information

<b>Immunogen</b>	Recombinant protein of human FRK
<b>Gene Accession</b>	BC012916
<b>Swissprot</b>	P42685
<b>Synonyms</b>	GTK,RAK,PTK5

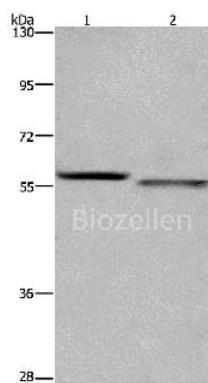
### Product Information

<b>Calculated MW</b>	58kDa
<b>Buffer</b>	PBS with 0.05% sodium azide, 50% glycerol, PH7.3
<b>Purify</b>	Affinity purification
<b>Dilution</b>	WB 1:500-1:2000, IHC 1:50-1:200

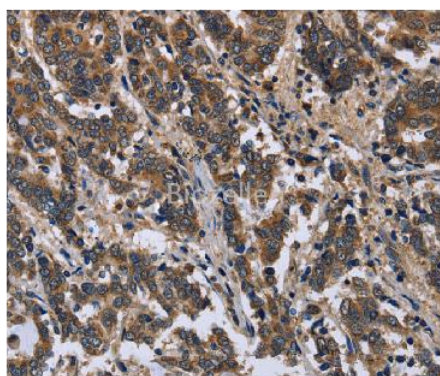
### Background

The protein encoded by this gene belongs to the TYR family of protein kinases. This tyrosine kinase is a nuclear protein and may function during G1 and S phase of the cell cycle and suppress growth.

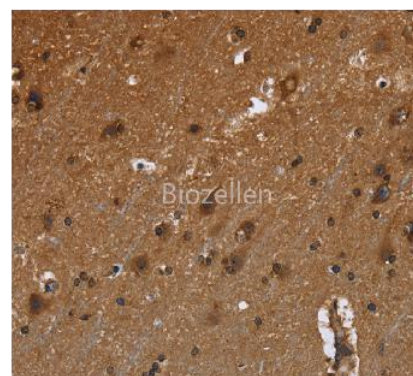
### Images



Western Blot analysis of K562 and A431 cell using FRK Polyclonal Antibody at dilution of 1:1200



Immunohistochemistry of paraffin-embedded Human liver cancer using FRK Polyclonal Antibody at dilution of 1:50



Immunohistochemistry of paraffin-embedded Human brain using FRK Polyclonal Antibody at dilution of 1:50