

gamma Tubulin Monoclonal Antibody

Catalog No.	B-IO-10029	Reactivity	H,M,R
Storage	Store at -20°C. Avoid freeze / thaw cycles.	Host	Mouse
Applications	WB,IHC-p	Isotype	IgG
Note: Centrifuge before opening to ensure complete recovery of vial contents.			

Images/Immunogen Information

Immunogen Synthetic Peptide of Gamma Tubulin

Swissprot P23258

Synonyms TUBG1

Product Information

Observed MW 50kDa

Buffer PBS with 0.02% sodium azide, 0.5% BSA and 50% glycerol pH 7.4.

Purify Protein A purification

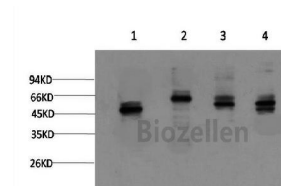
Clone No. Clone:7B1

Dilution WB 1:1000-2000, IHC 1:100-200

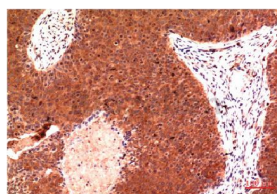
Background

This gene encodes a member of the tubulin superfamily. The encoded protein localizes to the centrosome where it binds to microtubules as part of a complex referred to as the gamma-tubulin ring complex. The protein mediates microtubule nucleation and is required for microtubule formation and progression of the cell cycle. A pseudogene of this gene is found on chromosome 7. TUBG1 (Tubulin Gamma 1) is a Protein Coding gene. Diseases associated with TUBG1 include Cortical Dysplasia, Complex, With Other Brain Malformations 4 and Reducing Body Myopathy. Among its related pathways are Regulation of PLK1 Activity at G2/M Transition and Sertoli-Sertoli Cell Junction Dynamics. GO annotations related to this gene include GTP binding and structural constituent of cytoskeleton. An important paralog of this gene is TUBG2.

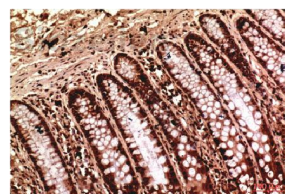
Images



Western Blot analysis of 1) Jurkat, 2) HeLa, 3) Rat brain, 4) Mouse brain using gamma Tubulin Monoclonal Antibody at dilution of 1:2000.



Immunohistochemistry of paraffin-embedded Human breast carcinoma tissue using gamma Tubulin Monoclonal Antibody at dilution of 1:200.



Immunohistochemistry of paraffin-embedded Human colon carcinoma tissue using gamma Tubulin Monoclonal Antibody at dilution of 1:200.