

beta actin Polyclonal Antibody

Catalog No.	B-IO-10027	Reactivity	H,M,R
Storage	Store at -20°C. Avoid freeze / thaw cycles.	Host	Rabbit
Applications	WB,IHC-p,IF,ELISA	Isotype	IgG
Note: Centrifuge before opening to ensure complete recovery of vial contents.			

Images/Immunogen Information

Immunogen Synthesized peptide derived from the N-terminal region of human Actin β .

Swissprot P60709

Synonyms ACTB,Actin,cytoplasmic 1,Beta-actin

Product Information

Calculated MW 42kDa

Observed MW 42kDa

Buffer PBS with 0.02% sodium azide,0.5% BSA and 50% glycerol pH 7.4.

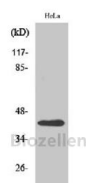
Purify Affinity purification

Dilution WB 1:1000-1:4000, IHC 1:100-1:300, IF 1:100-1:300, ELISA 1:20000

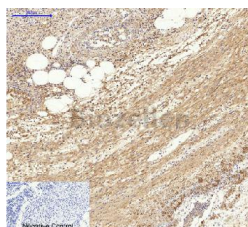
Background

Beta actin, also named as ACTB and F-Actin, belongs to the actin family. Actins are highly conserved globular proteins that are involved in various types of cell motility and are ubiquitously expressed in all eukaryotic cells. At least six isoforms of actins are known in mammals and other vertebrates: alpha (ACTC1, cardiac muscle 1), alpha 1 (ACTA1, skeletal muscle) and 2 (ACTA2, aortic smooth muscle), beta (ACTB), gamma 1 (ACTG1) and 2 (ACTG2, enteric smooth muscle). Beta and gamma 1 are two non-muscle actin proteins. Most actins consist of 376aa, while ACTG2 (rich in muscles) has 375aa and ACTG1(found in non-muscle cells) has only 374aa. Beta actin has been widely used as the internal control in RT-PCR and Western Blotting as a 42-kDa protein. However, the 41 kDa cleaved fragment of beta actin can be generated during apoptosis process. This antibody can recognize all the actins.

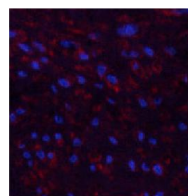
Images



Western Blot analysis of Hela cells using beta actin Polyclonal Antibody at dilution of 1:2000.



Immunohistochemistry of paraffin-embedded Human appendix tissue using beta actin Polyclonal Antibody at dilution of 1:200.



Immunofluorescence analysis of Human uterus tissue using beta actin Polyclonal Antibody at dilution of 1:200.